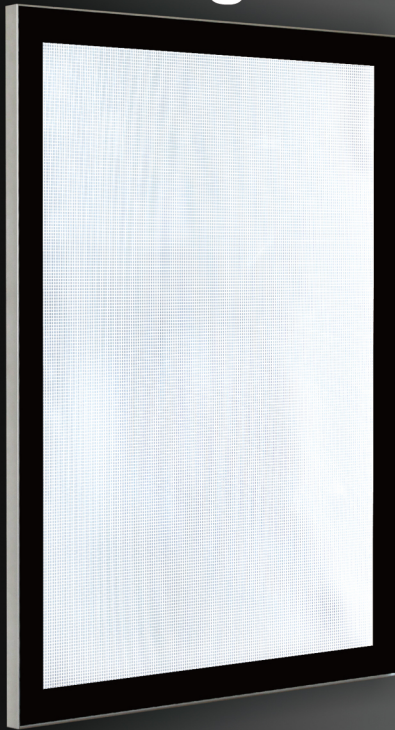


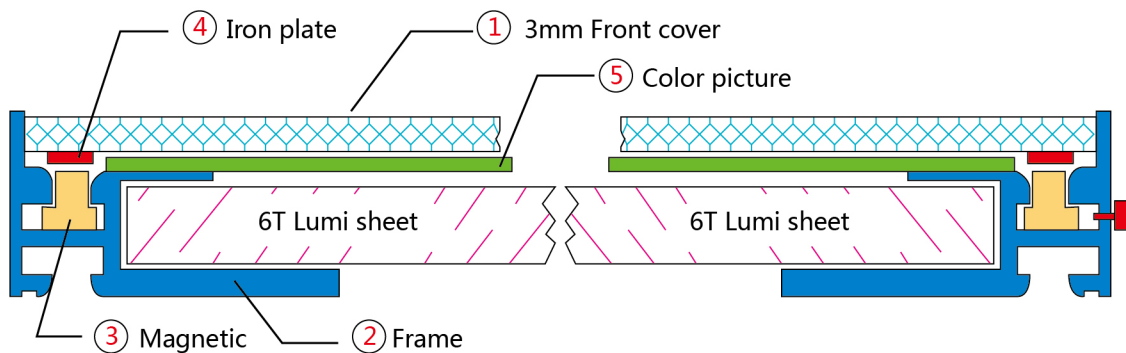
# Magnetic LED Light Box MS#16



## Specifications

	MS#16					
Max Size	1200mmX900mm					
Min Size	152mm*152mm					
Thickness	17mm					
Color temperature	2700K	3000K	3500K	4100K	5300K	6500K
Operating Temperature	- 20° ~ + 60°					
Weight	7.5kg/sq.M+Frame					
3mm Front cover	silver/black					
Aluminum color	silver/black					

## General view MS#16



Types of angles



R angle

R angle  
(Just like Iphone)



90 degree

90° Vertical degree angle

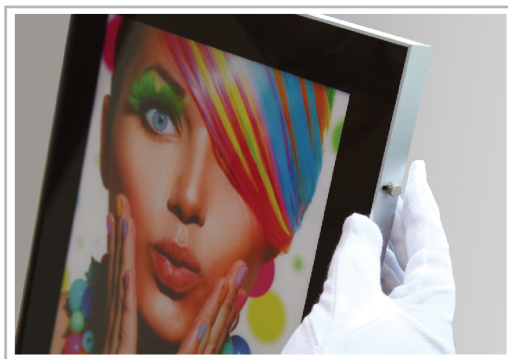
Special function ( 1 ) build-in poster



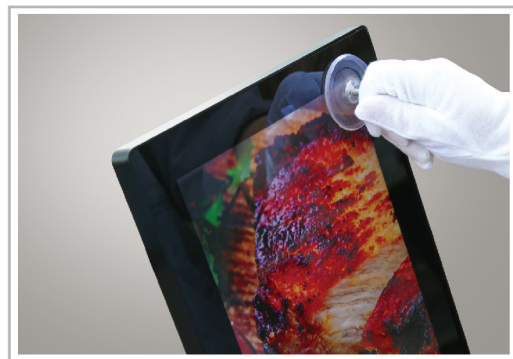
Inner spring clip(moving poster into spring clip gently)



Special function ( 2 ) switch on

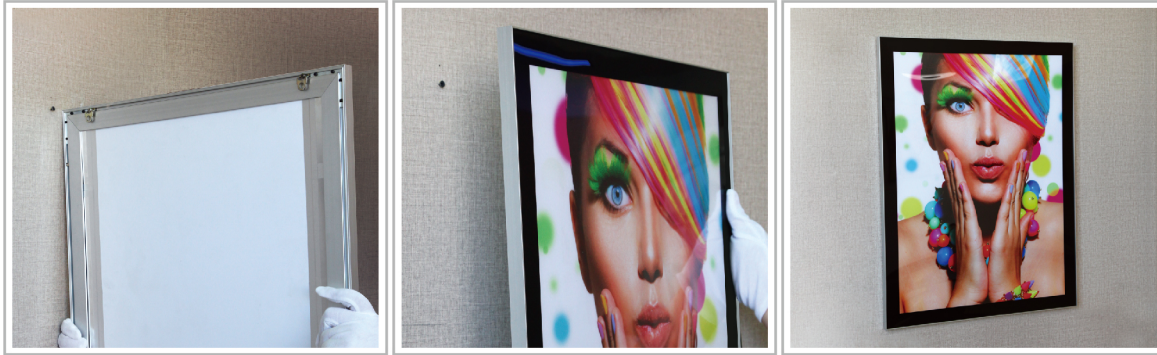


Misung mode

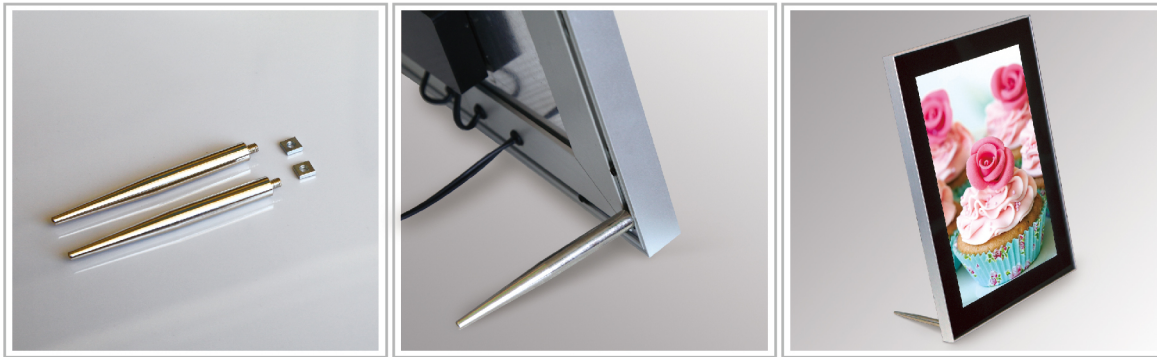


Traditional way long time and easy to loss sucker

## Display Type

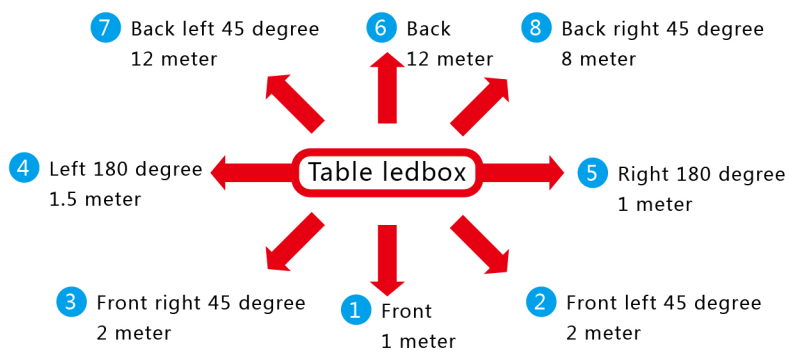


Mounting type



Desk type

## UV sensor



### Note

1. Senser Lighting up when people moving in its range, and shutdown after 3 minutes when people go out its range.
2. Senser is effective for any moving matters, such as cats and dogs.

Table Ledbox sensor distance