

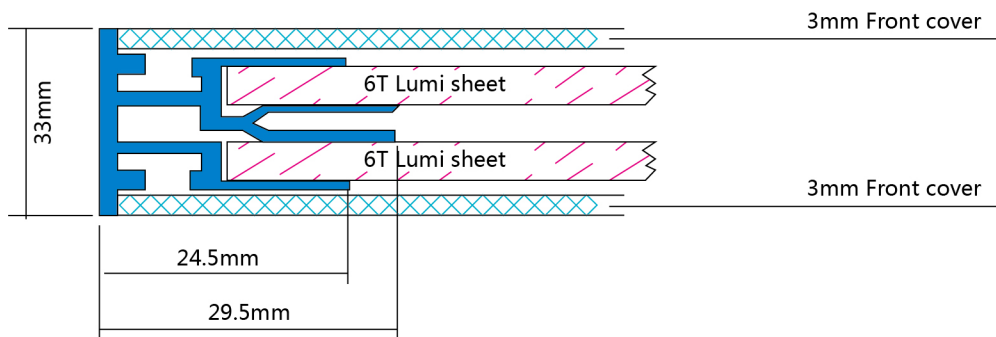
Magnetic LED Light Box MS#17



Specifications

	MS#17					
Max Size	1200mmX900mm					
Min Size	152mm*152mm					
Thickness	33mm					
Color temperature	2700K	3000K	3500K	4100K	5300K	6500K
Operating Temperature	- 20° ~ + 60°					
Weight	7.5kg/sq.M X2+Frame					
3mm Front cover	silver/black					
Aluminum color	silver/black					

General view MS#17



Types of angles



R angle

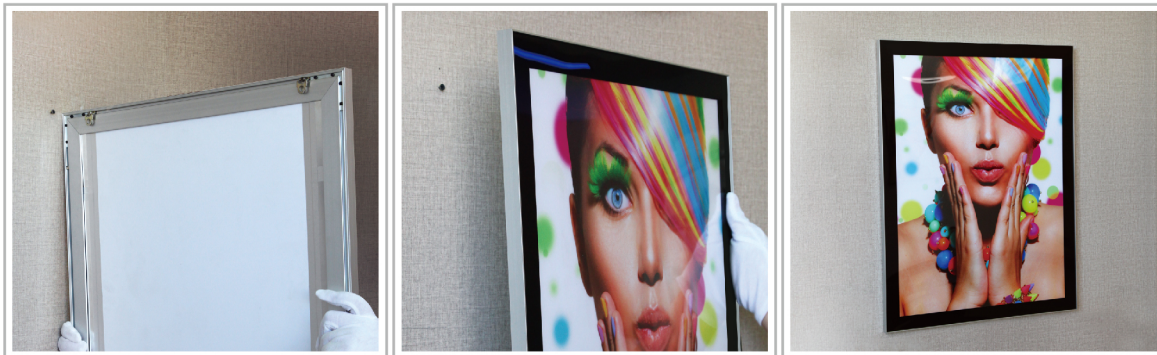
R angle
(Just like Iphone)



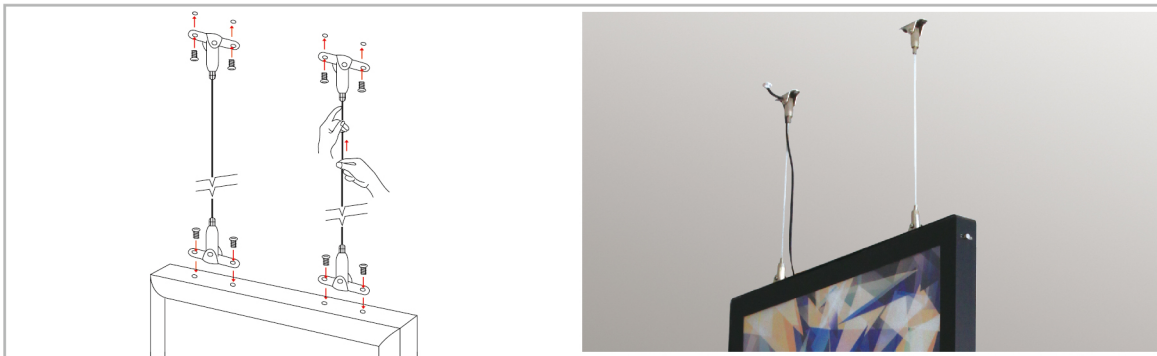
90 degree

90 degree angle

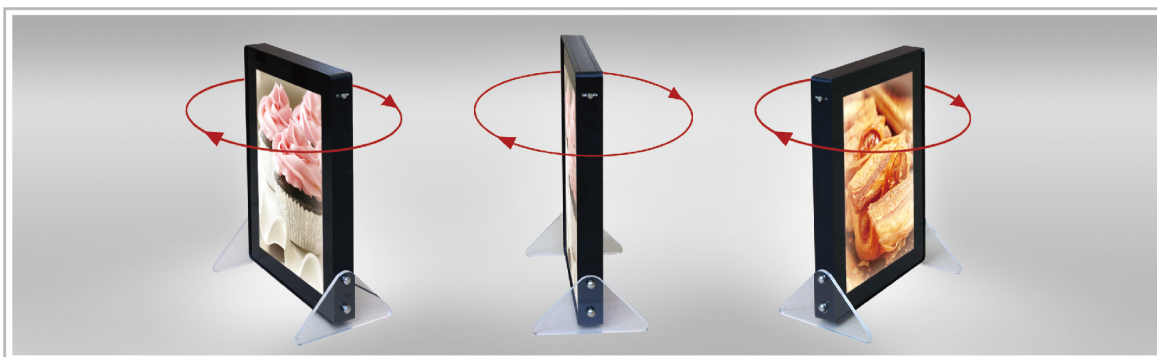
Display mode



Mounting type (single side illumination, suit for large size)



Hanging type(Double side illumination)



Desk type(Double side illumination)

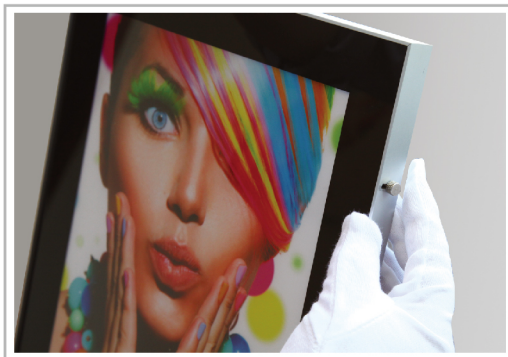
Special function (1) switch on



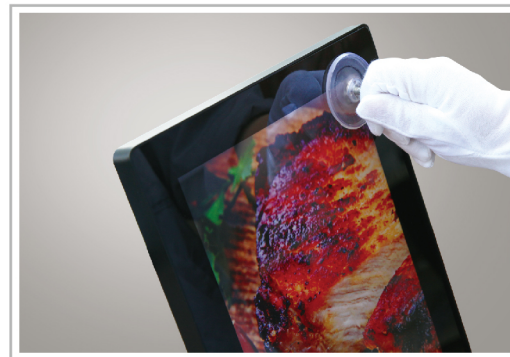
Inner spring clip(moving poster into spring clip gently)



Special function (2) switch on

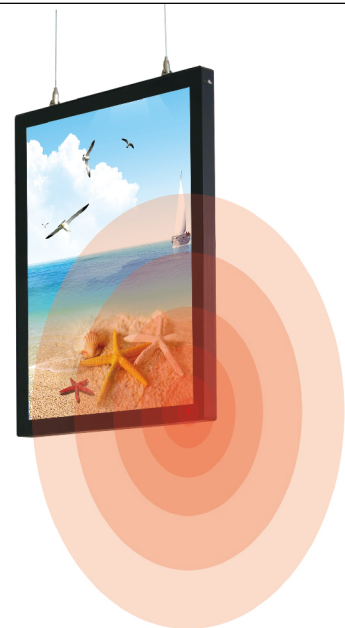
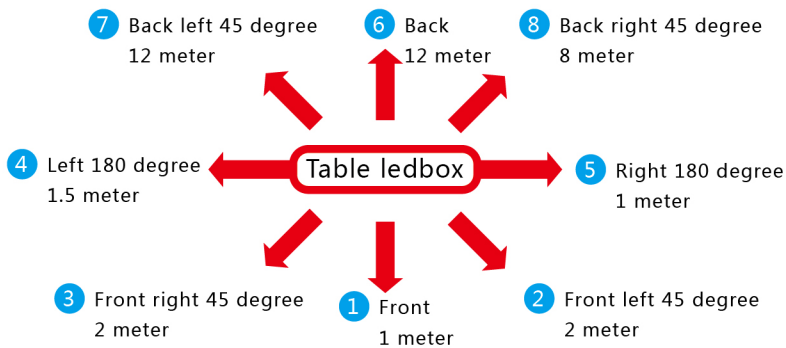


Misung mode



Defect of traditional way (long time and easy to loss sucker)

UV sensor



Note

- 1.Senser Lighting up when people moving in its range,and shutdown after 3 minutes when people go out its range.
- 2.Senser is effective for any moving matters,such as cats and dogs.

Table Ledbox sensor distance